

## ONLY FOR TRANSPORTS NOT SCHEDULED DIRECTLY BY ACIN

### 1 ACCESS THE ARRIVAL NOTIFICATION FORM.

**MANDATORY REGISTRATION 48 HOURS BEFORE** of arrival. This notification will help improve the fluidity of the plants and reduce waiting times.



SCAN THE QR

or

**CLICA AQUÍ**



After confirmation of the registration they will receive an email.

### 2 GO TO THE UNLOAD ADDRESS

#### ARBUCIES



SCHEDULE: 07:00-19:00



C/ de Hostaric km3, 17401 Arbúcies,  
Girona

#### ATTENTION

400 meters from the administrative building you will see a long ramp that goes down to the floor. Park and hand in the documentation on a scale.

If the car park is collapsed, go to the secondary car park in front of the central offices (upper black nave with the ACIN logo).

#### RIUDARENES



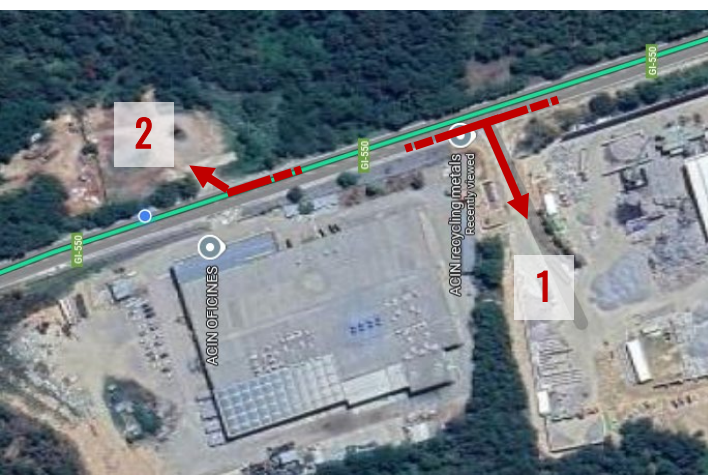
SCHEDULE: 07:00-17:00



C/ Montcorb s/n, 17241 Riudarenes,  
Girona

#### ATTENTION

It cannot pass through the town due to a limitation of tons. You will need to go along the Santa Coloma KM 4 road and use that driveway. Then you will find a solar panel company. You must turn left and follow the path straight ahead.



For more information or doubts, please contact our logistics department



**logistica@acinrm.com**



**+34 617 47 03 79**



**acinrm.com**